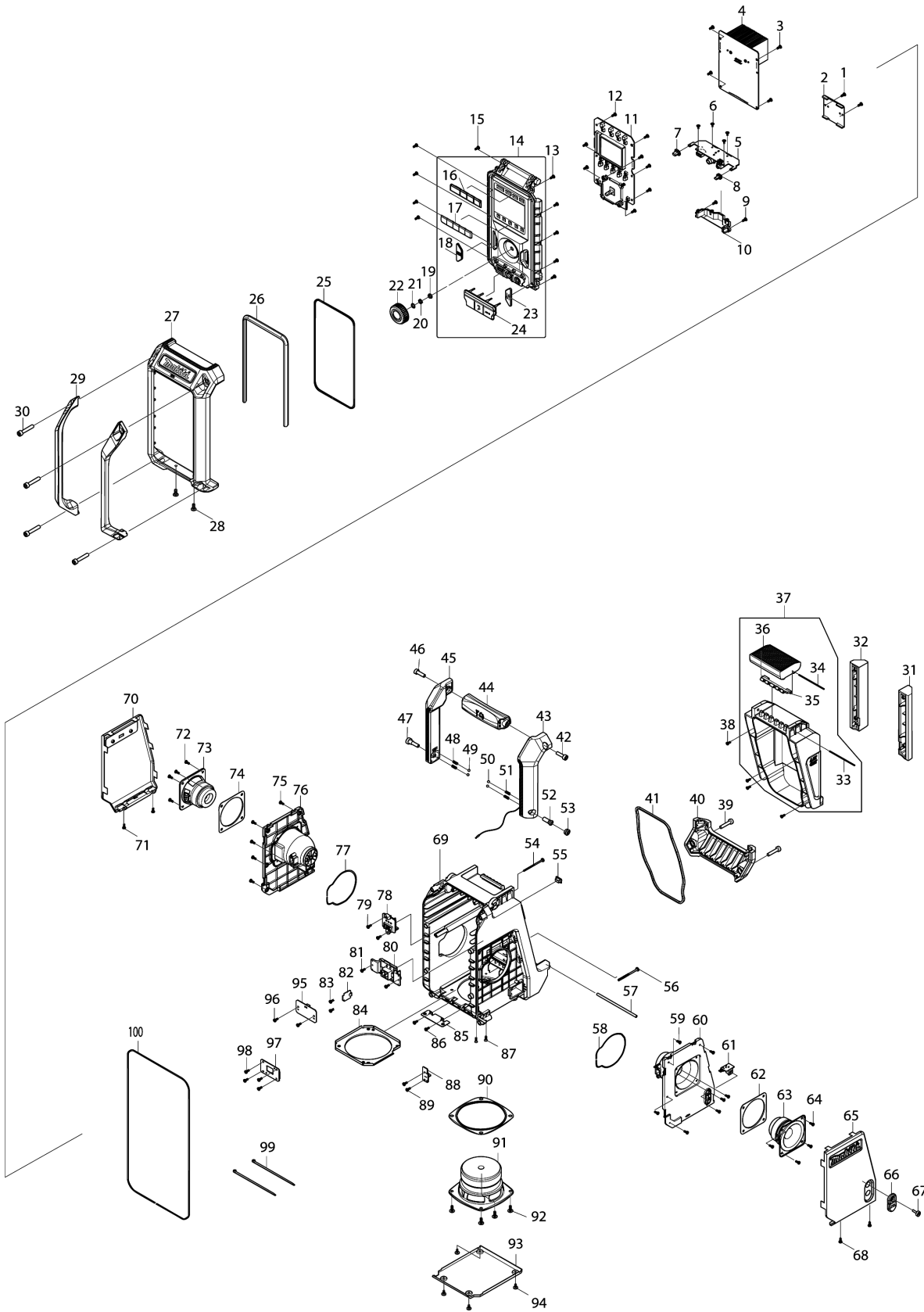


Model No.DMR115 JOB SITE RADIO



Model No.DMR115 JOB SITE RADIO

| Tétel | Cikkszám | Megnevezés | Átalakulás | Menny. | New/Old | Opc 1 | Opc 2 | Megjegyzés |
|-------|------------|----------------------------------|------------|--------|---------|-------|-------|------------|
| 001 | SE00000521 | SCREW PTB 3X8(ZK) 29S16308001 | | 2 | | | | |
| 002 | SE00000683 | PCB H ASS'Y | | 1 | | | | |
| 003 | SE00000521 | SCREW PTB 3X8(ZK) 29S16308001 | | 4 | | | | |
| 004 | SE00000774 | PCB A ASS'Y | | 1 | | | | |
| 005 | SE00000775 | PCB P ASS'Y | | 1 | | | | |
| 006 | SE00000685 | SCREW PTB 2.6X5 ZK | | 4 | | | | |
| 007 | SE00000750 | LED RUBBER L | | 1 | | | | |
| 008 | SE00000751 | LED RUBBER R | | 1 | | | | |
| 009 | SE00000521 | SCREW PTB 3X8(ZK) 29S16308001 | | 2 | | | | |
| 010 | SE00000752 | JACK PCB HOLDER | | 1 | | | | |
| 011 | SE00000776 | PCB C ASS'Y | | 1 | | | | |
| 012 | SE00000521 | SCREW PTB 3X8(ZK) 29S16308001 | | 8 | | | | |
| 013 | SE00000521 | SCREW PTB 3X8(ZK) 29S16308001 | | 5 | | | | |
| 014 | SE00000777 | FRONT CABINET ASS'Y(CE) | | 1 | | | | |
| D10 | | INC. 16-18,23,24 | | | | | | |
| 015 | SE00000521 | SCREW PTB 3X8(ZK) 29S16308001 | | 5 | | | | |
| 016 | SE00000779 | POWER KEY | | 1 | | | | |
| 017 | SE00000695 | PRESET KEY | | 1 | | | | |
| 018 | SE00000780 | AUTO TUNE | | 1 | | | | |
| 019 | SE00000754 | EN/SW WASHER | | 1 | | | | |
| 020 | SE00000755 | EN/SW NUT | | 1 | | | | |
| 021 | SE21B1110A | ROTARY KNOB RING | | 1 | | | | |
| 022 | SE00000698 | ROTARY KNOB | | 1 | | | | |
| 023 | SE00000697 | EQ KEY | | 1 | | | | |
| 024 | SE00000699 | JACK RUBBER COVER | | 1 | | | | |
| 025 | SE00000700 | FRONT CABINET PACKING | | 1 | | | | |
| 026 | SE00000756 | FRONT LENS | | 1 | | | | |
| 027 | SE00000701 | FRONT BUMPER | | 1 | | | | |
| 028 | SE09064161 | SCREW M4X16 | | 2 | | | | |
| 029 | SE00000703 | FRONT BAR | | 2 | | | | |
| 030 | SE00000709 | SCREW PTHE 6X33(CR) | | 4 | | | | |
| 031 | SE00000704 | BATTERY BUMPER R | | 1 | | | | |
| 032 | SE00000705 | BATTERY BUMPER L | | 1 | | | | |
| 033 | SE00000539 | PIN D2X77 2100B300200 | | 1 | | | | |
| 034 | SE00000533 | PIN D2X88 2100B300100 | | 1 | | | | |
| 035 | SE00000536 | LOCKER HINGE 3300B30000010 | | 1 | | | | |
| 036 | SE00000706 | LOCKER COVER | | 1 | | | | |
| 037 | SE00000757 | BATTERY COVER | | 1 | | | | |

Model No.DMR115 JOB SITE RADIO

| Tétel | Cikkszám | Megnevezés | Átalakulás | Menny. | New/Old | Opc 1 | Opc 2 | Megjegyzés |
|-------|------------|----------------------------------|------------|--------|---------|-------|-------|------------|
| D10 | | INC. 33-36 | | | | | | |
| 038 | SE00000521 | SCREW PTB 3X8(ZK) 29S16308001 | | 4 | | | | |
| 039 | SE00000709 | SCREW PTHE 6X33(CR) | | 2 | | | | |
| 040 | SE00000710 | REAR BUMPER | | 1 | | | | |
| 041 | SE00000711 | BATTERY COVER PACKING | | 1 | | | | |
| 042 | SE00000176 | SCREW PTHE6X20(CR) | | 1 | | | | |
| 043 | SE00000781 | RIGHT HANDLE ASS'Y | | 1 | | | | |
| 044 | SE00000713 | HANDLE BAR | | 1 | | | | |
| 045 | SE00000714 | LEFT HANDLE ASS'Y | | 1 | | | | |
| 046 | SE00000176 | SCREW PTHE6X20(CR) | | 1 | | | | |
| 047 | SE00000715 | SCREW PTHE 6X17(CR) | | 1 | | | | |
| 048 | SE00000759 | SPRING | | 2 | | | | |
| 049 | SE09994007 | STEEL BALL | | 2 | | | | |
| 050 | SE09994007 | STEEL BALL | | 2 | | | | |
| 051 | SE00000759 | SPRING | | 2 | | | | |
| 052 | SE00000716 | SCREW PTHE 7X16(CR) | | 1 | | | | |
| 053 | SE00000717 | SCREW PTHE 10.8X4.5(CR) | | 1 | | | | |
| 054 | SE00000445 | SCREW PTB 3X45(NI) | | 1 | | | | |
| 055 | SE00000721 | UPDATE RUBBER | | 1 | | | | |
| 056 | SE00000445 | SCREW PTB 3X45(NI) | | 1 | | | | |
| 057 | SE021PC030 | BATTERY COVER LOCKER | | 1 | | | | |
| 058 | SE00000730 | SPEAKER HOLDER PACKING | | 1 | | | | |
| 059 | SE00000521 | SCREW PTB 3X8(ZK) 29S16308001 | | 7 | | | | |
| 060 | SE00000782 | SPEAKER HOLDER R | | 1 | | | | |
| 061 | SE00000724 | PCB F ASS'Y | | 1 | | | | |
| 062 | SE00000729 | SPRAKER 2.5"" PACKING | | 1 | | | | |
| 063 | SE00000728 | SPEAKER ASS'Y(2.5"") | | 1 | | | | |
| 064 | SE00000521 | SCREW PTB 3X8(ZK) 29S16308001 | | 4 | | | | |
| 065 | SE00000725 | RIGHT SPK NET ASS'Y | | 1 | | | | |
| 066 | SE00000726 | DC JACK COVER | | 1 | | | | |
| 067 | SE00000404 | SCREW PTHE 3X14(CR) | | 1 | | | | |
| 068 | SE00000521 | SCREW PTB 3X8(ZK) 29S16308001 | | 2 | | | | |
| 069 | SE00000783 | REAR CABINET ASS'Y(BLUE:CE) | | 1 | | | | |
| 070 | SE00000727 | LEFT SPK NET ASS'Y | | 1 | | | | |
| 071 | SE00000521 | SCREW PTB 3X8(ZK) 29S16308001 | | 2 | | | | |
| 072 | SE00000521 | SCREW PTB 3X8(ZK) 29S16308001 | | 4 | | | | |
| 073 | SE00000728 | SPEAKER ASS'Y(2.5"") | | 1 | | | | |
| 074 | SE00000729 | SPRAKER 2.5"" PACKING | | 1 | | | | |

Model No.DMR115 JOB SITE RADIO

| Tétel | Cikkszám | Megnevezés | Átalakulás | Menny. | New/Old | Opc 1 | Opc 2 | Megjegyzés |
|-------|------------|----------------------------------|------------|--------|---------|-------|-------|------------|
| 075 | SE00000521 | SCREW PTB 3X8(ZK) 29S16308001 | | 5 | | | | |
| 076 | SE00000731 | SPEAKER HOLDER L | | 1 | | | | |
| 077 | SE00000730 | SPEAKER HOLDER PACKING | | 1 | | | | |
| 078 | SE00000732 | TERMINAL 10.8V-A-3PIN | | 1 | | | | |
| 079 | SE00000521 | SCREW PTB 3X8(ZK) 29S16308001 | | 2 | | | | |
| 080 | SE00000733 | TERMINAL E ASS'Y | | 1 | | | | |
| 081 | SE00000521 | SCREW PTB 3X8(ZK) 29S16308001 | | 2 | | | | |
| 082 | SE00000785 | PCB G ASS'Y | | 1 | | | | |
| 083 | SE00000193 | SCREW 3X10 | | 2 | | | | |
| 084 | SE00000734 | SPEAKER PLATE | | 1 | | | | |
| 085 | SE00000735 | REAR PLATE | | 1 | | | | |
| 086 | SE00000521 | SCREW PTB 3X8(ZK) 29S16308001 | | 2 | | | | |
| 087 | SE00000736 | SCREW JMF 3X10 ZK | | 2 | | | | |
| 088 | SE00000737 | PCB B ASS'Y | | 1 | | | | |
| 089 | SE00000521 | SCREW PTB 3X8(ZK) 29S16308001 | | 2 | | | | |
| 090 | SE00000738 | SPEAKER 4"" PACKING | | 1 | | | | |
| 091 | SE00000739 | SPEAKER ASS'Y (4"") | | 1 | | | | |
| 092 | SE09064161 | SCREW M4X16 | | 4 | | | | |
| 093 | SE00000761 | SPEAKER GRILL B | | 1 | | | | |
| 094 | SE00000521 | SCREW PTB 3X8(ZK) 29S16308001 | | 4 | | | | |
| 095 | SE00000786 | PCB D ASS'Y | | 1 | | | | |
| 096 | SE00000521 | SCREW PTB 3X8(ZK) 29S16308001 | | 2 | | | | |
| 097 | SE00000743 | PCB J ASS'Y | | 1 | | | | |
| 098 | SE00000521 | SCREW PTB 3X8(ZK) 29S16308001 | | 4 | | | | |
| 099 | SE00000195 | W/TIES 100MM | | 2 | | | | |
| 100 | SE00000744 | REAR CABINET PACKING | | 1 | | | | |
| A01 | SE00000679 | AC ADAPTER (CE) | | 1 | | | | |

Please order the parts with part number.

Print Date 2019/11/14